

AUTOMATING RISK AND PERFORMANCE WITH DATA

Kevin Legere, Director of Product Design at ACL



I'm a techie,
I'm a problem solver
I'm a data nerd

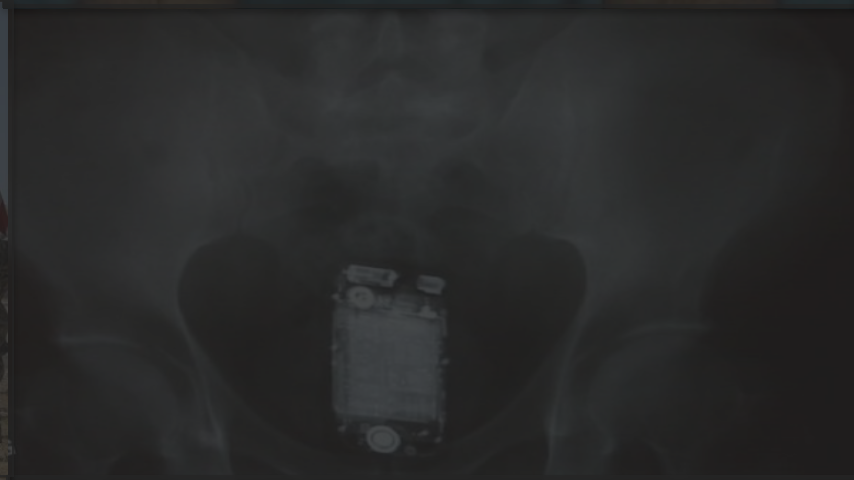




VANCOUVER, BC

What are we solving for?

IMPACT



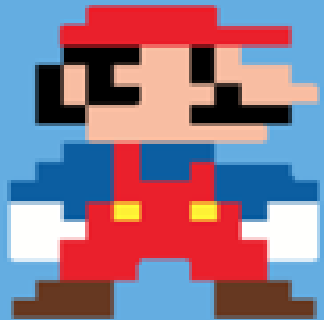
What are we solving for?

PEOPLE

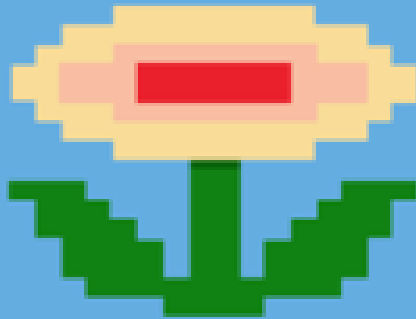
This is!



ACL Customer



ACL Platform



Awesome person that
does rad stuff!



This isn't what ACL makes.

Stolen city funds pay for Gainesville woman's Brazilian butt lift, cable bill

By WFLA Web Staff

Published: June 15, 2017, 3:01 pm



Booking photo.

GAINESVILLE, Fla. (WFLA) – A former Gainesville city employee stole nearly \$100,000 from the city to pay for cosmetic surgery and other purchases, The Gainesville Sun reports.

Trending on WFLA.com

- Lineman flown to hospital after being electrocuted in Englewood
- Hurricane Maria weakens to Category 2, core of hurricane moving away from Puerto Rico
- Police: Hardee County lineman killed in fall from parking garage
- Child and 26 animals removed from Spring Hill home with floor covered in feces and urine
- SWAT situation underway in Parrish after report of shots fired

Find Stories By Date

June 2017						
S	M	T	W	T	F	S
				1	2	3
4	5	6	7	8	9	10
11	12	13	14	15	16	17
18	19	20	21	22	23	24
25	26	27	28	29	30	
« May				Jul »		



'Evans Haile & Friends' to
open orchestra's season
Friday



Florida Museum of
Natural History
celebrates 100 years



Hurricanes drive up
Florida gas prices



State moves toward more medical
marijuana licenses

Sex trafficking suspect is former Oak
View Middle teacher



Carlos Holt is making his mark

MOST POPULAR

- 1 GPD receives complaint against 'hot
cop'
Sep 15 at 3:56 PM
- 2 UF official charged in \$180K theft
Sep 19 at 12:35 PM
- 3 GPD officers disciplined for profiling,
crude texts
Sep 15 at 6:52 PM
- 4 Two arrested after child battery
Sep 15 at 9:51 AM

OUR PICKS





What makes ACL different?

Content & Intelligence



Strategy (Strategy module)

Operations/Process (Projects module)

Assessments (Results module)



Analytics (Analytics/Analytics Exchange)

ACL PLATFORM



CONTENT & INTELLIGENCE



STRATEGY



PROJECTS



RESULTS



ANALYTICS

A dark blue background featuring a collage of various digital and data-related icons. These include a magnifying glass, a location pin, a smartphone, a laptop, a calendar, a hand pointing at a screen, a truck, a speech bubble, and various geometric shapes and dots in shades of orange, red, and white.

Embracing the era of open data

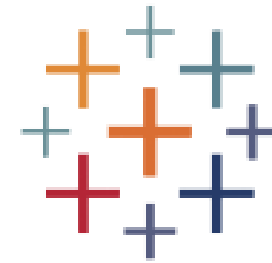
CONNECT TO ANY DATA SOURCE



INTEGRATE WITH OTHER TOOLS



python



+ tableau®

Qlik



Power BI

The background features a soft-focus illustration of a city skyline. In the foreground, an open book is visible, with its pages showing faint sketches of buildings and a tree. Above the book, the sky is depicted with a sun, several clouds, and a butterfly. The overall aesthetic is artistic and conceptual, suggesting a connection between data and storytelling.

Telling the story behind the data

REMEDIATION

Results

☆ The Northwind Story

Save ...

Table View							Process View	
ID		Report_ID	Aa Employee_Name	Transaction_Date	Claim_Date_Time	Posting_Time	<input type="checkbox"/> Record #5	
1		5102082405	Accounting	2016-03-25	2016-03-25T12:18:13-11:19	01:10:01		
2		1100497954	Research and Development	2016-11-27	2016-11-27T21:02:24-02:58	02:13:10		
3		5000000082	Research and Development	2016-01-09	2016-01-09T00:14:15-10:06	20:07:10		
4		5102080603	Human Resources	2016-04-14	2016-04-14T21:16:58-03:17	08:40:04		
<input type="checkbox"/>		5102083356	Human Resources	2016-10-06	2016-10-06T18:32:24-08:29	12:28:14		
6		5102086371	Human Resources	2016-08-16	2016-08-16T06:13:32-03:46	02:22:48		
7		5102084909	Public Relations	2016-01-09	2016-01-09T01:59:09-09:25	14:42:52		
8		5102085997	Public Relations	2016-04-22	2016-04-22T13:15:37-08:28	12:41:39		
9		5102082394	Asset Management	2016-12-21	2016-12-21T18:54:58-11:58	17:49:16		
10		5102083884	Research and Development	2016-02-12	2016-02-12T15:39:09-09:24	14:40:57		
11		5102083189	Media Relations	2016-02-27	2016-02-27T23:31:59-11:26	03:14:29		
12		1100497809	Research and Development	2016-07-10	2016-07-10T01:50:52-01:00	14:49:05		
13		5000001055	Asset Management	2016-09-12	2016-09-12T10:20:12-09:50	19:43:29		
14		5102085021	Legal Department	2016-02-02	2016-02-02T19:28:44-06:50	22:38:51		
15		5102085167	Legal Department	2016-12-21	2016-12-21T04:16:38-00:21	12:42:55		

Record #5

Data

Responses 1

Activity 2

Report_ID

5102083356

Employee_Name

Human Resources

Transaction_Date

2016-10-06

Claim_Date_Time

2016-10-06T18:32:24-08:29

Posting_Time

12:28:14

Amount

2237.9

Category

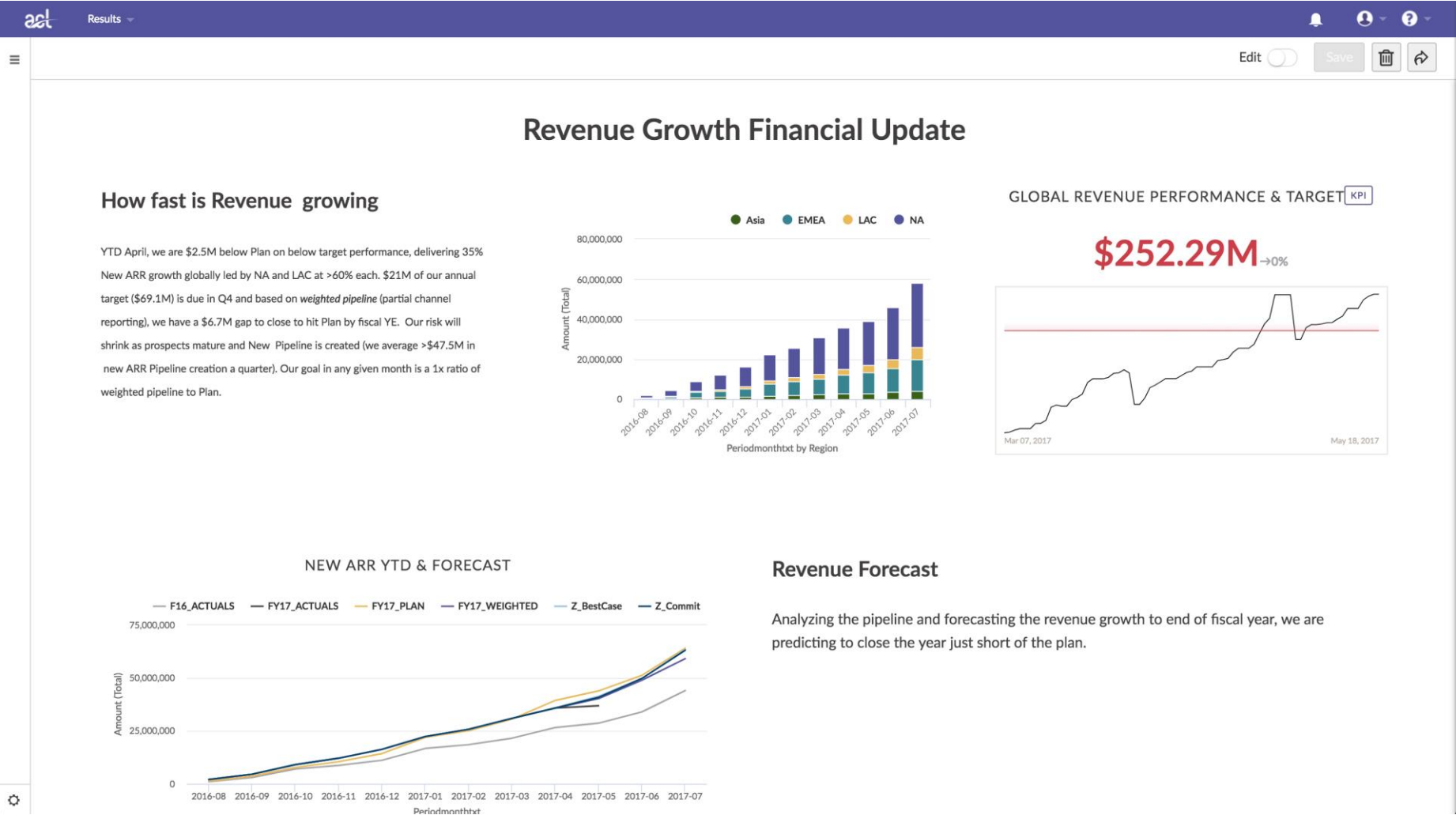
ACCOMOD

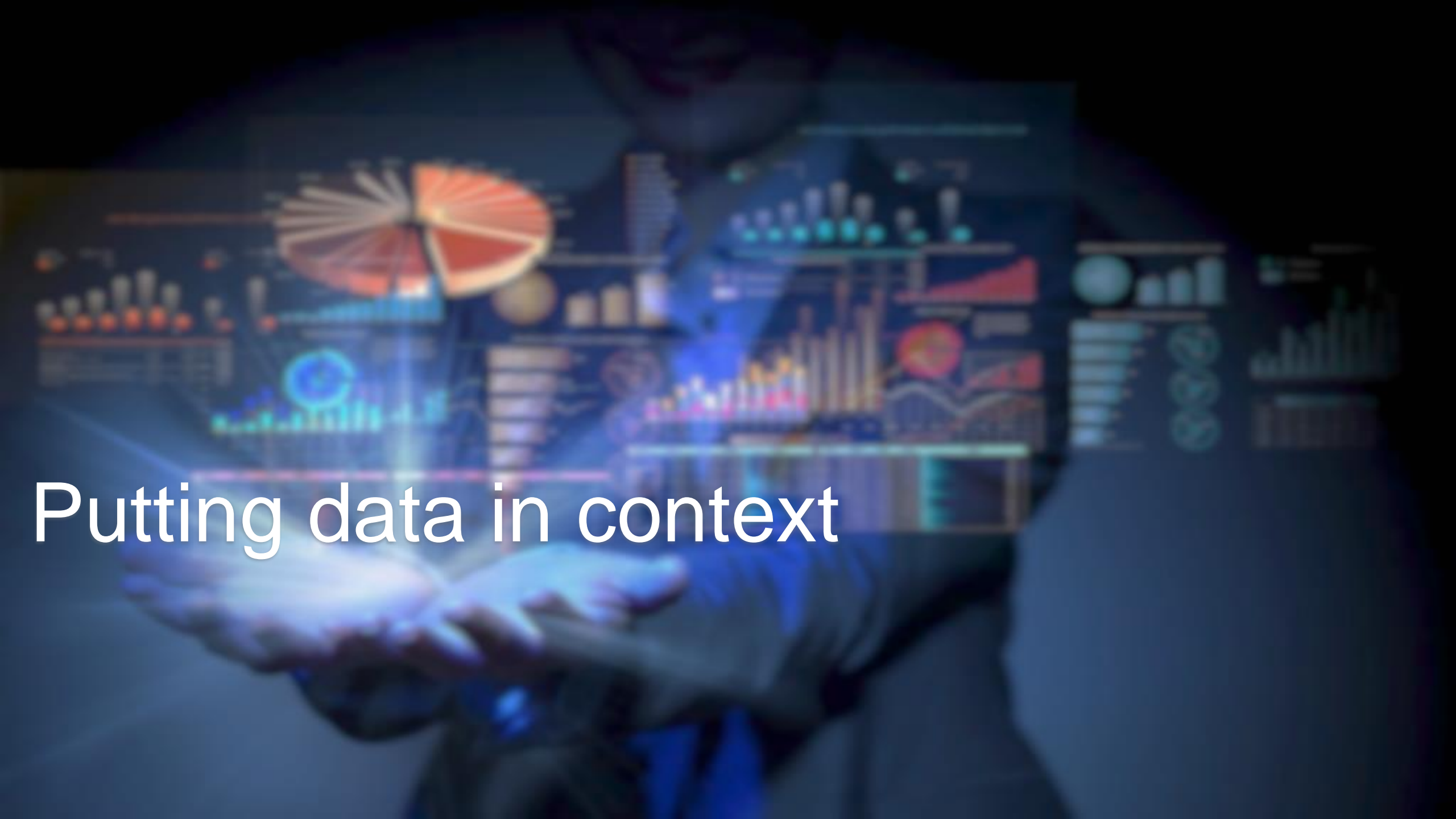
Merchant

RAMADA INN

Payment Card

STORYBOARDS





Putting data in context

RISKS AND CONTROLS

acl

Projects

Application Systems Operational Processes

Monitoring

Dashboard

Planning

Fieldwork

Reviews

Results

Issues

Status

To-Dos

Requests

Timesheets

Settings

Search this project

Process List

Search list...

User Assigned

All

Clear

Reference	Process	User Assigned	
AV	Systems Availability Management	Shahed Khalili	Go To
SEC	Systems Access Management	Dan Zitting	Go To
CON	Information Security Governance	Dan Zitting	Go To
OrgM	Employee Training & Management	Dan Zitting	Go To
SEC-P	Physical Security Management	Shahed Khalili	Go To
SEC-N	Network Security Management	Shahed Khalili	Go To
PERF	Application Performance Monitoring	Shahed Khalili	Go To
CI	Product Development Continuous Integration & Delivery	Shahed Khalili	Go To
CDP	Production Deployment & Change Management	Shahed Khalili	Go To
IM	Incident Management	Shahed Khalili	Go To
BCP	Business Continuity Management & Risk Assessment	Shahed Khalili	Go To

Add Process

Import Process

Assessment Surveys

Assessment surveys allow you to send surveys to control owners for the purposes of performing self assessments. To learn more, check out the [help guide](#).

Create an assessment for...

acl

COMPLIANCE MAPS

acl

Projects

[Back](#)

Compliance Maps

Compliance Summary Report

Standards and Regulations (11)

Manage Standards and Regulations

Applicable3,609

Gaps3,380

Coverage229


N/A6

Working Requirement

Search requirements...

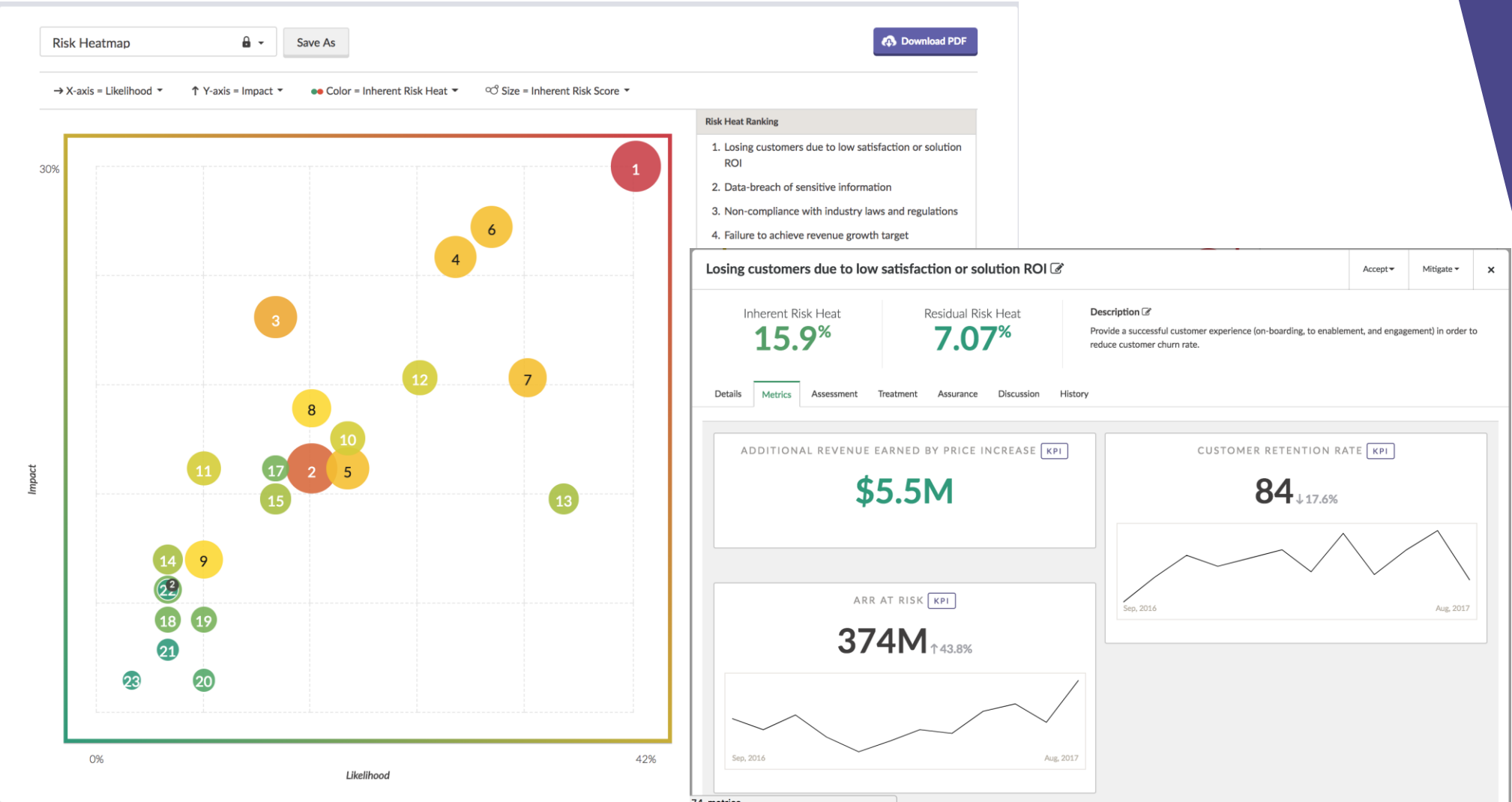
Requirement	Coverage	Covered	Issues	Assurance	
▶ Bank Secrecy Act/Anti-Money Laundering (FFIEC 2014)	2.08%	✖	-	0.00%	+ Add Child
▶ COBIT® 5 Framework	9.08%	✖	3	47.83%	Locked
▶ HIPAA Omnibus Final Rule (2013)	0.00%	✖	-	-	+ Add Child
▶ Human Resources Internal Policies	95.56%	✖	3	83.33%	+ Add Child
▶ ISO/IEC 27002:2013 Information Technology - Security Techniques - Code of Practice for Information Security Controls	7.14%	✖	-	100.00%	Locked
▶ NIST Framework for Improving Critical Infrastructure Cybersecurity - Version 1.0 (2014)	84.00%	✖	3	20.00%	+ Add Child
▶ NIST SP 800-53 Program Management Controls - Revision 4	21.43%	✖	-	-	+ Add Child
▶ NIST SP 800-53 Security Controls (Rev 4) / FedRAMP 2016 01	0.00%	✖	-	0.00%	+ Add Child

acl



Automating risk and control assessments

KEY PERFORMANCE AND RISK METRICS



ASSESSMENT DRIVERS

00.00%

Financial misstatements

00.00%

Counterparty risk

82.510.1%

Increase in profitability

8410.3%

Failure of vendors

Emerging (4)

00.00%

Financial misstatements

00.00%

Counterparty risk

82.510.1%

Increase in profitability

8410.3%

Failure of vendors

Emerging (4)

00.00%

Financial misstatements

00.00%

Counterparty risk

82.510.1%

Increase in profitability

8410.3%

Failure of vendors

Strategy

Pied Piper

Losing customers due to

Inherent Risk Heat

15.9%

Details

Metrics

Assessment

Risk Tags

Risk

Strategic Objectives

Achieve

Responsible Operating Units

Product Development and User Experience

Product Delivery & Operations

Global Marketing

Indirect Sales/Channel Partners

Consulting Services

Customer Success & Support

Edit Assessment Driver

Risk

Losing customers due to low satisfaction or solution ROI

Responsible Operating Units

Product Development and User Experience

Risk Scoring Factor

Likelihood (automation set)

Metric

Customer Retention Rate

CUSTOMER RETENTION RATE

KPI

84

↓17.6%

Sep, 2016

Aug, 2017

greater than

> 93

=

Low

≤ 93

> 85

=

Medium

less than or equal to

≤ 85

=

High



Thank you!

kevin_legere@acl.com