

# USING AUDIT ANALYTICS IN IT INFRASTRUCTURE ENVIRONMENTS

1

**Eckhardt Kriel C.A. (SA)**  
**E Kriel & Associates Inc.**



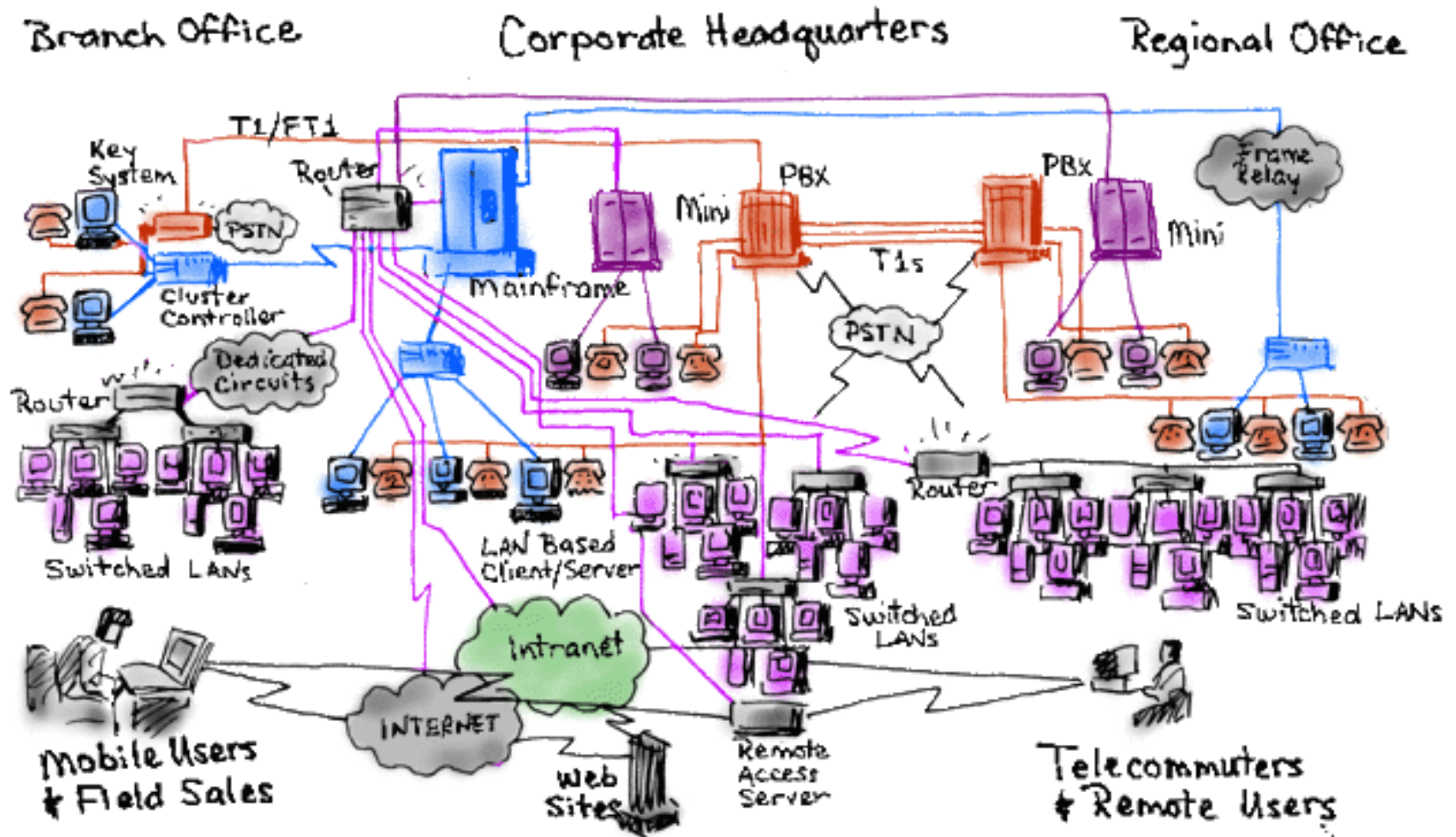
# ITIL AND IT INFRASTRUCTURE

## **ITIL v2 defines IT infrastructure:**

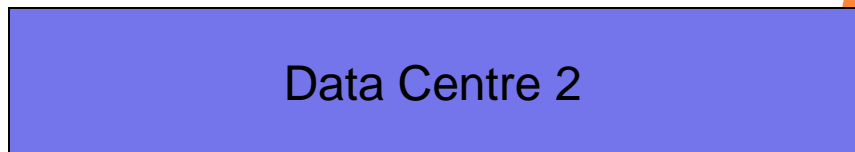
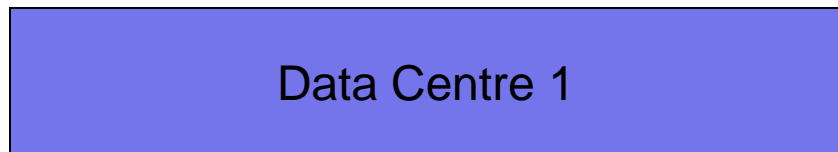
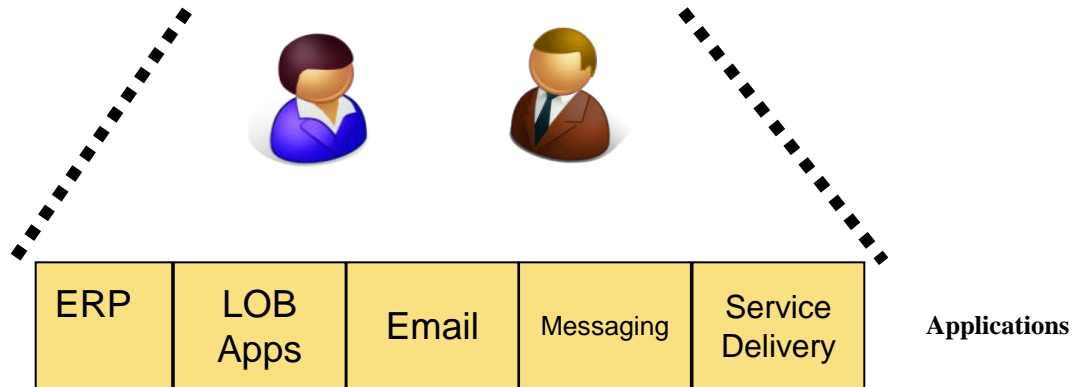
All of the components (configuration items) that are needed to deliver IT services to customers.

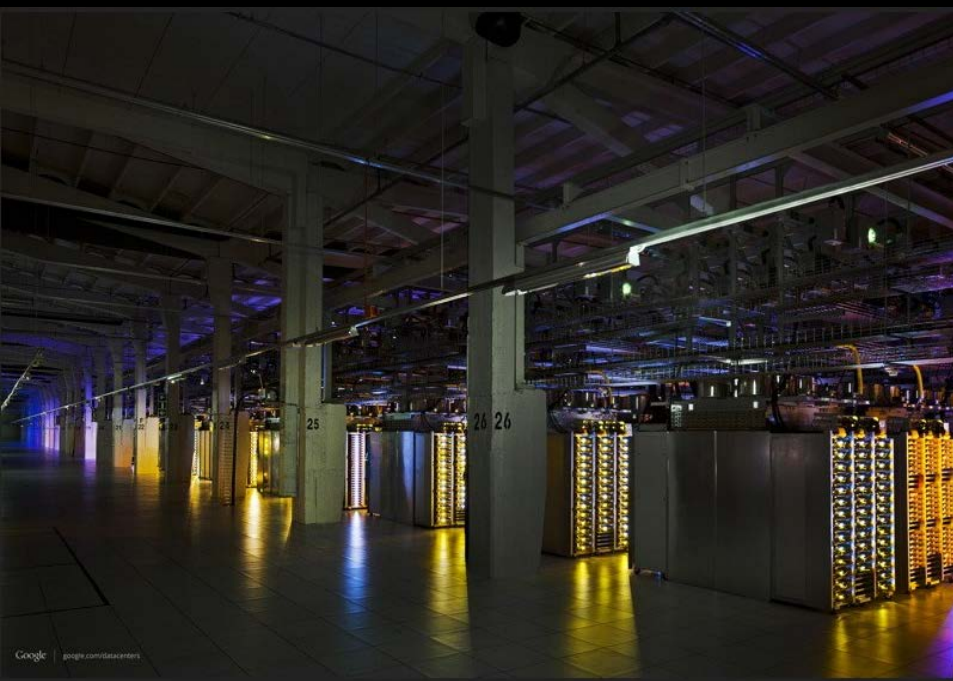
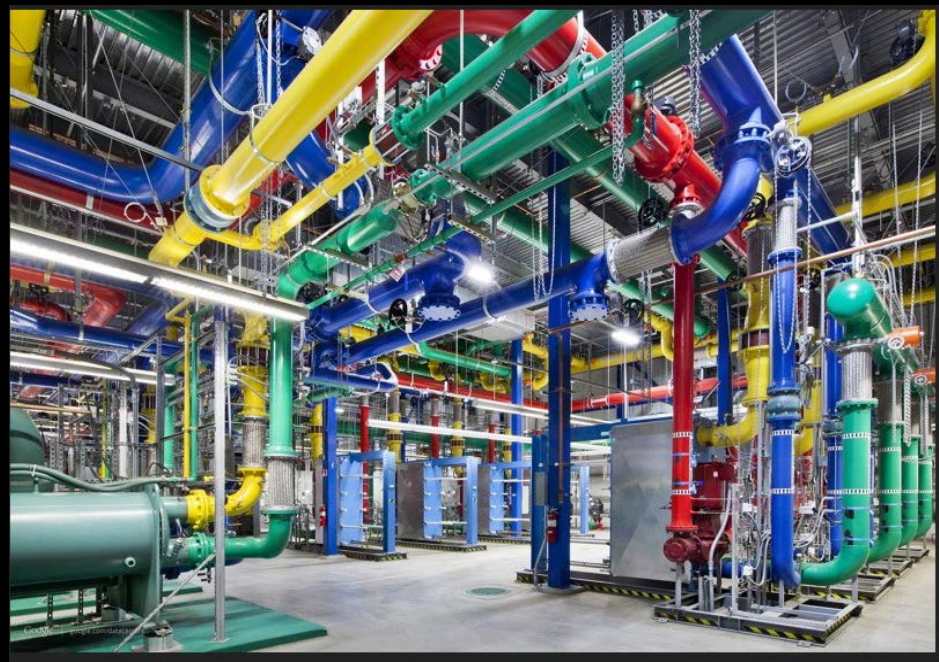
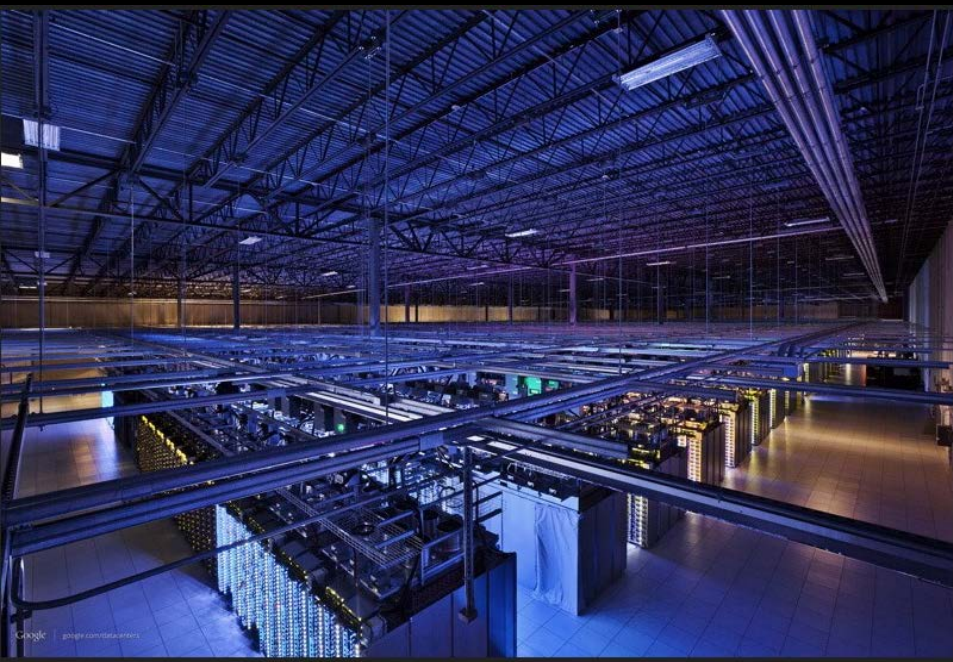
The IT Infrastructure consists of more than just hardware and software.

# ANOTHER WAY OF LOOKING AT IT INFRA

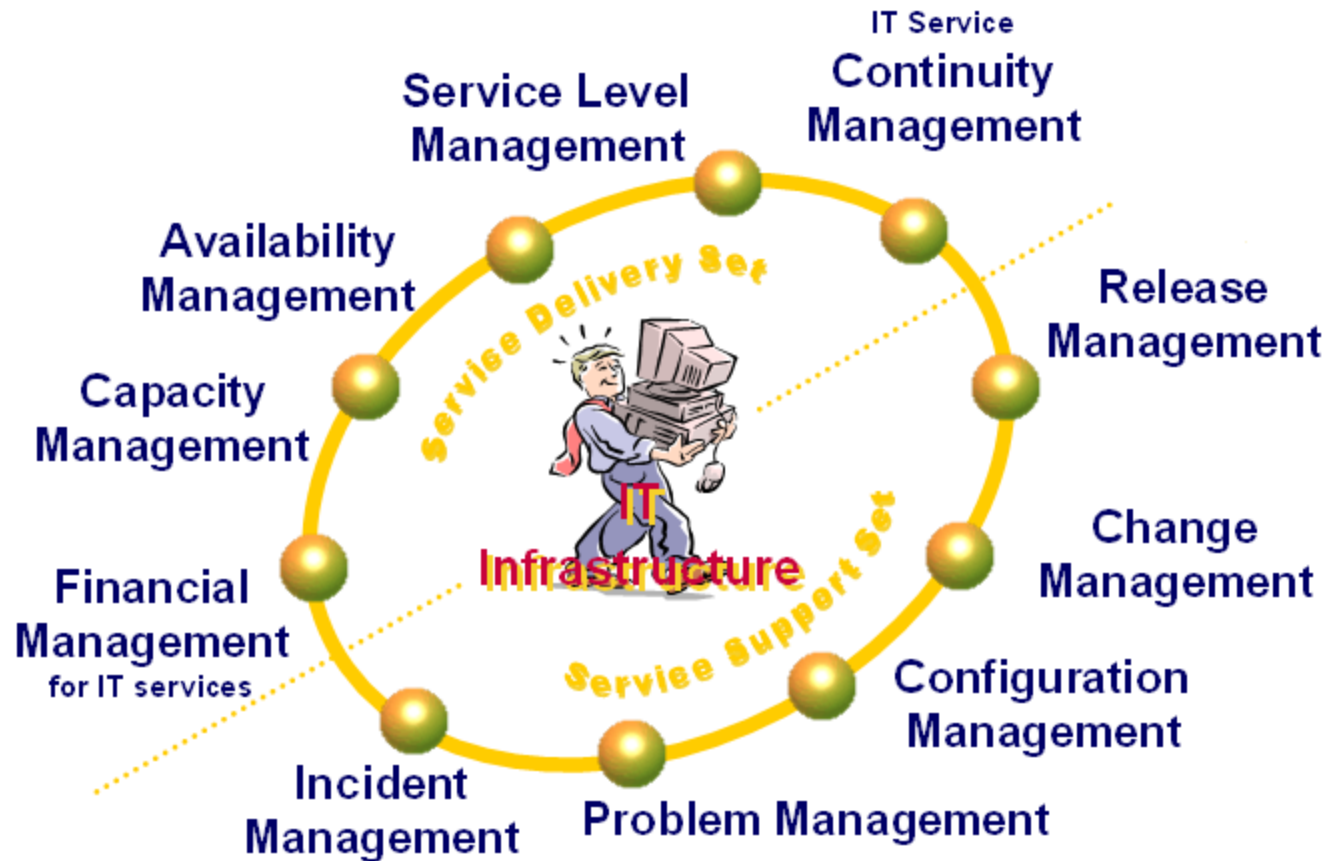


# PYRAMID





# ITSM Components



# BIG DATA (ALMOST)

## ○ Volume

- From 4 mainframes.
- 17,000+ servers (AIX, LINUX, UNIX, Windows, iSeries).
- Thousands of devices – firewalls, routers, etc
- Millions of records created every hour.

## ○ Limited Velocity

- Little or no need to analyze in real time.

## ○ Steady State Variety

- Mainly text based structured records. No media files.

## ○ Steady State Variability

- Data comes from a steady state of known sources at a mostly steady rate.

MANAGE OPERATIONS

MAINFRAME BATCH PROCESSING



# CA 7 – PRIMARY PROCEDURES

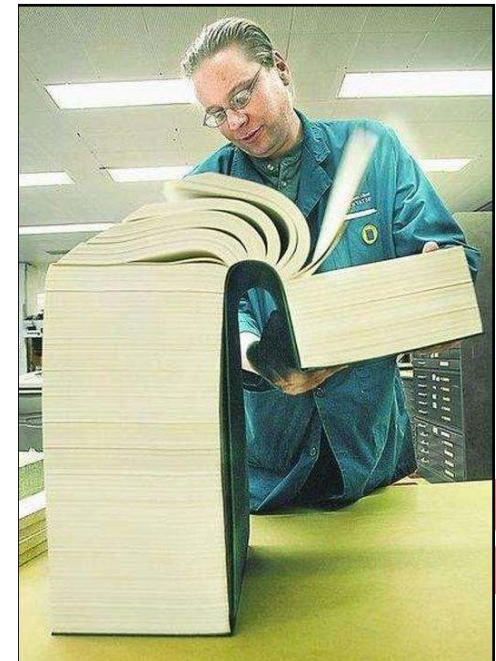
- Analysis and testing of Job Abends
- Analysis and testing of Changes to Job Schedules
- Testing links to Incident and Change Management systems

# CA 7 – REPORTING ENVIRONMENT

- Large volume of data (CA-7 Job Log for 1 Month = 2000+ pages).
- Complex data structure (print image reports).
- *Automation with scripts and GUI – easily re-executed by anyone.*

The image shows a large, complex printout report from a CA-7 system. The report is multi-page and contains various sections of data and control card information. Key sections include:

- Control Card Information:** Multiple control cards with fields for job name, date, and time. For example, one card shows "12NOBANNER113350001113652359 TN \*ALL\*" and another shows "12NOBANNER113350001113652359 TN \*ALL\*" with a date of "01/30/12 11:53".
- Log Records:** A section titled "LOG RECORDS READ" showing a list of records with columns for ID, operator, date, and time. The records are listed in a table format.
- Summary Statistics:** A section titled "TOTALS" showing summary statistics for cards read, accepted, and rejected. For example, "001 CARDS READ" is 13, "002 CARDS ACCEPTED" is 13, and "000 CARDS REJECTED" is 0.
- Job Log:** A section titled "JOB LOG" showing a list of jobs with columns for job name, date, and time. The jobs are listed in a table format.



# WINDOWS BATCH AND ACL ROUTINES



# CA 7 PREDICTIVE ANALYTICS CHANGES

Content restricted due to client confidentiality.

Item will be made available during presentation

# CA 7 PREDICTIVE ANALYTICS

## ABENDS

Content restricted due to client confidentiality.

Item will be made available during presentation

# CA 7 PREDICTIVE ANALYTICS CHANGES / ABENDS

Content restricted due to client confidentiality.

Item will be made available during presentation

# CA 7 PREDICTIVE ANALYTICS

Content restricted due to client confidentiality.

Item will be made available during presentation

# MANAGE ACCESS

## - ACCESS PROVISIONING



# UNIX

Content restricted due to client confidentiality.

Item will be made available during presentation

# UNIX

Content restricted due to client confidentiality.

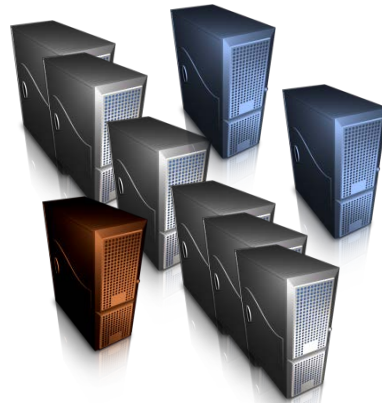
Item will be made available during presentation

# UNIX – VERIFYING CHANGES IN USERS MONTH OVER MONTH

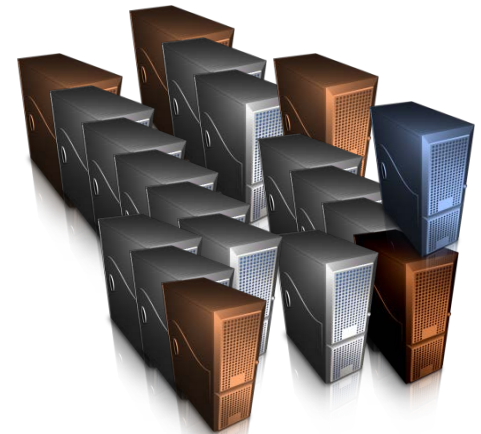
Month 1



Month 2



Month 3



# UNIX – VERIFYING CHANGES IN USERS MONTH OVER MONTH

Content restricted due to client confidentiality.

Item will be made available during presentation

# MANAGE CHANGE

# MAINFRAME ENDEVOR CHANGES

Content restricted due to client confidentiality.

Item will be made available during presentation

# VISUALIZATION – ANALYTIC REVIEW

Content restricted due to client confidentiality.

Item will be made available during presentation

# OPERATING SYSTEM CONFIGURATION



# IBM MAINFRAME – z/OS

Content restricted due to client confidentiality.

Item will be made available during presentation

# TRANSFORMATION

Content restricted due to client confidentiality.

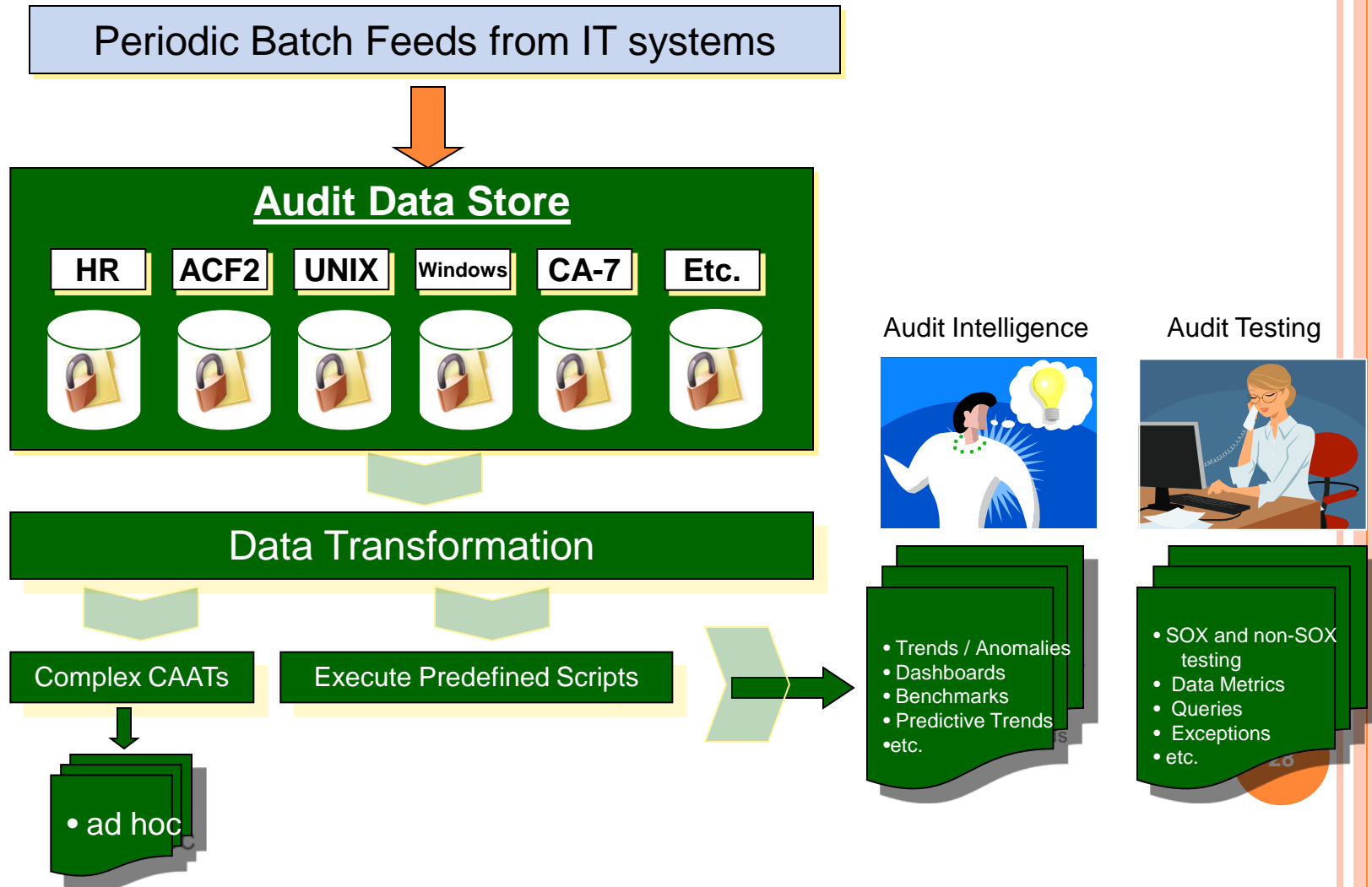
Item will be made available during presentation

# AUDIT TESTS

Content restricted due to client confidentiality.

Item will be made available during presentation

# MOVE TO MORE FREQUENT TESTING



# QUESTIONS



**Eckhardt Kriel CA (SA)**

**E Kriel & Associates Inc.**

1148 Forest Trail Place  
Oakville  
ON L6M 3H7

[www.krilassoc.com](http://www.krilassoc.com)

Mobile: +1. 416 451-3919

Direct: +1. 416 451-3919

Email: [ekriel@live.ca](mailto:ekriel@live.ca)